



## Overview

Scanning Devices loadcell controllers deliver measurement and control functions which may be used in a wide variety of applications. They feature compact form and versatility in systems which require precise measurement of weight or force. Our loadcell controllers include on-board processing and storage capabilities.

Load Cell Controllers are available as Stand Alone devices in 1/8 Din panel packaging or as PC Peripheral boards.

Popular control functions are built into the instrument and include the logic sequence for a variety of applications.

One such application, Fill-by-Weight, is initiated by a digital input, tares the loadcell, energizes a digital output to begin the fill, energizes a second output at a "slow-down" set point, and energizes a third to indicate completion.

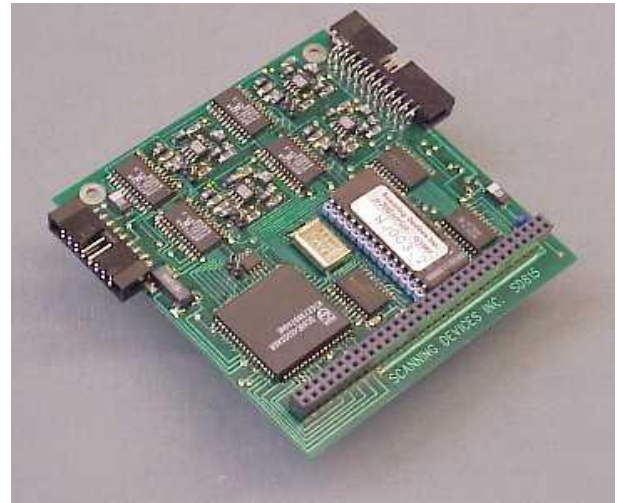
Our PC/104 and ISA loadcell controllers may be directly accessed by DOS-based or Windows-based programs to perform an almost unlimited variety of tasks such as data acquisition, analysis, and display and process control.

## Features/Capabilities

- Precise analog circuitry provides accurate excitation and measurement of 350 ohm Wheatstone bridge type transducers
- Four set points may be entered, stored and associated with a digital output.
- Measurements are continuously compared to set points for identification of "out of range" measurements
- Digital outputs indicate the relationship between measurements and set points.
- Scanning Devices can custom configure loadcell controllers for your specific applications.

## PC Peripheral Loadcell Controllers

- Designed to be used as PC peripherals
- Require PC program for calibration and setup
- Once Set-up they operate without PC intervention
- Take Measurements, respond t digital inputs, set/clear digital outputs
- Data can be transferred to use in PC program
- Program libraries available to illustrate application techniques.



## Options

- Single Channel and Four Channel Controllers
- 2 or 4 wire bridge input
- 4 digital inputs and 4 Digital outputs
- On-board eeprom configuration storage
- Each channel separately calibrated and configured
- Simple setup and calibration utilities
- C Function Library for Program Development

## Applications

- Check Weighing
  - 4 Presets & Outputs
- Continuous Measurement and Comparison to Set Points
  - With or without PC commands
- Automatic Fill-by-Weight
  - With or without PC intervention
  - Allows PC monitoring of fill operation
- Continuous Measurement for Calibration
  - Allows calibration of loadcells